



# MONTHLY MEMBERSHIP PROGRESS REPORT

District 25 G

Results as of: 01/31/2018

GMT: STEVE ANTON

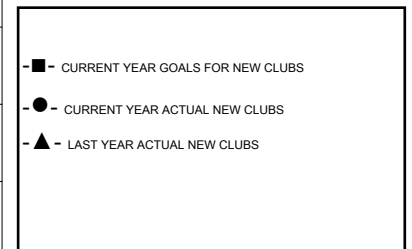
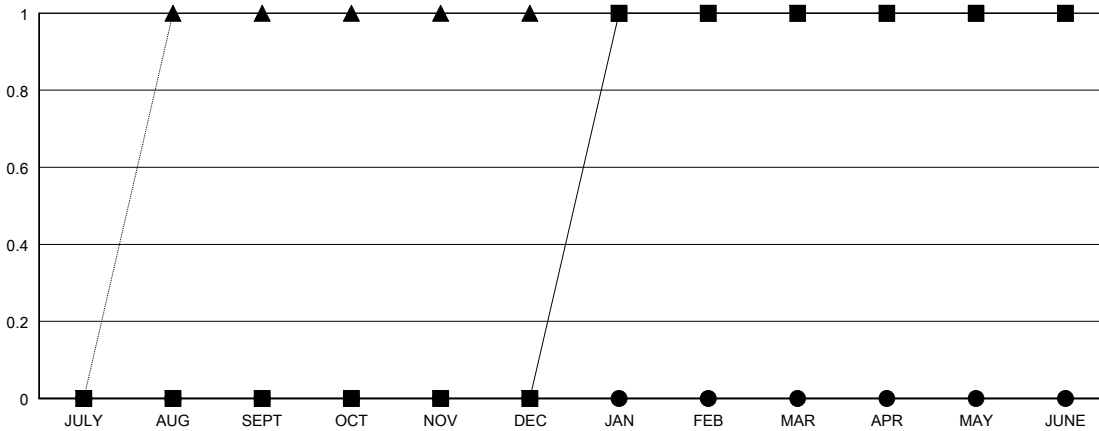
LOCATION INDIANA

GMT CA

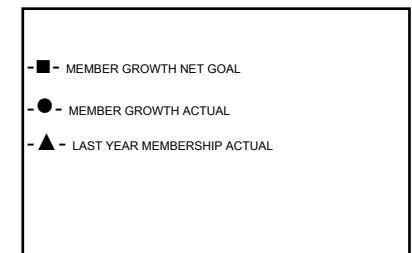
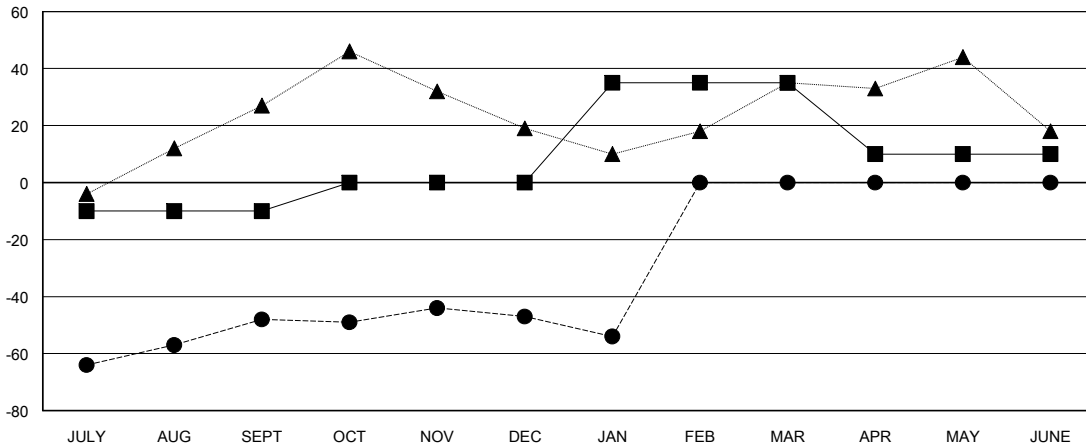
Clubs			
RESULTS FOR 2017-2018			
QUARTER	NEW CLUB GOAL	NEW CLUBS	DROPPED CLUBS
JULY/AUG/SEPT	0	0	0
OCT/NOV/DEC	0	0	1
JAN/FEB/MAR	1	0	0
APR/MAY/JUNE	0	0	0

Members			
RESULTS FOR 2017-2018			
QUARTER	MEMBER GROWTH NET GOAL	MEMBER GROWTH ACTUAL	DROPPED MEMBERS ACTUAL (including transfers)
JULY/AUG/SEPT	-10	33	80
OCT/NOV/DEC	10	23	22
JAN/FEB/MAR	35	9	16
APR/MAY/JUNE	-25	0	0

GOALS AND ACTUAL NEW CLUBS CUMULATIVE



GOALS AND ACTUAL MEMBERS CUMULATIVE



DROPPED CLUBS: 1	23 CLUBS OF 52 ADDED 1 OR MORE NEW MEMBERS	<u>GENDER DISTRIBUTION</u>	
		MALE	1,058 (71.73%)
		FEMALE	417 (28.27%)
		Women Percentage Fiscal Year Goal: 27%	
<u>DROPPED MEMBERS</u>		TOTAL FAMILY UNIT MEMBERS	323
DECEASED	12	FAMILY MEMBERS PAYING HALF DUES	164
CLUB CANCELLED	0		
OTHER	106		
TOTAL	118		

[CLICK HERE FOR CUMULATIVE MEMBERSHIP DATA](#)